

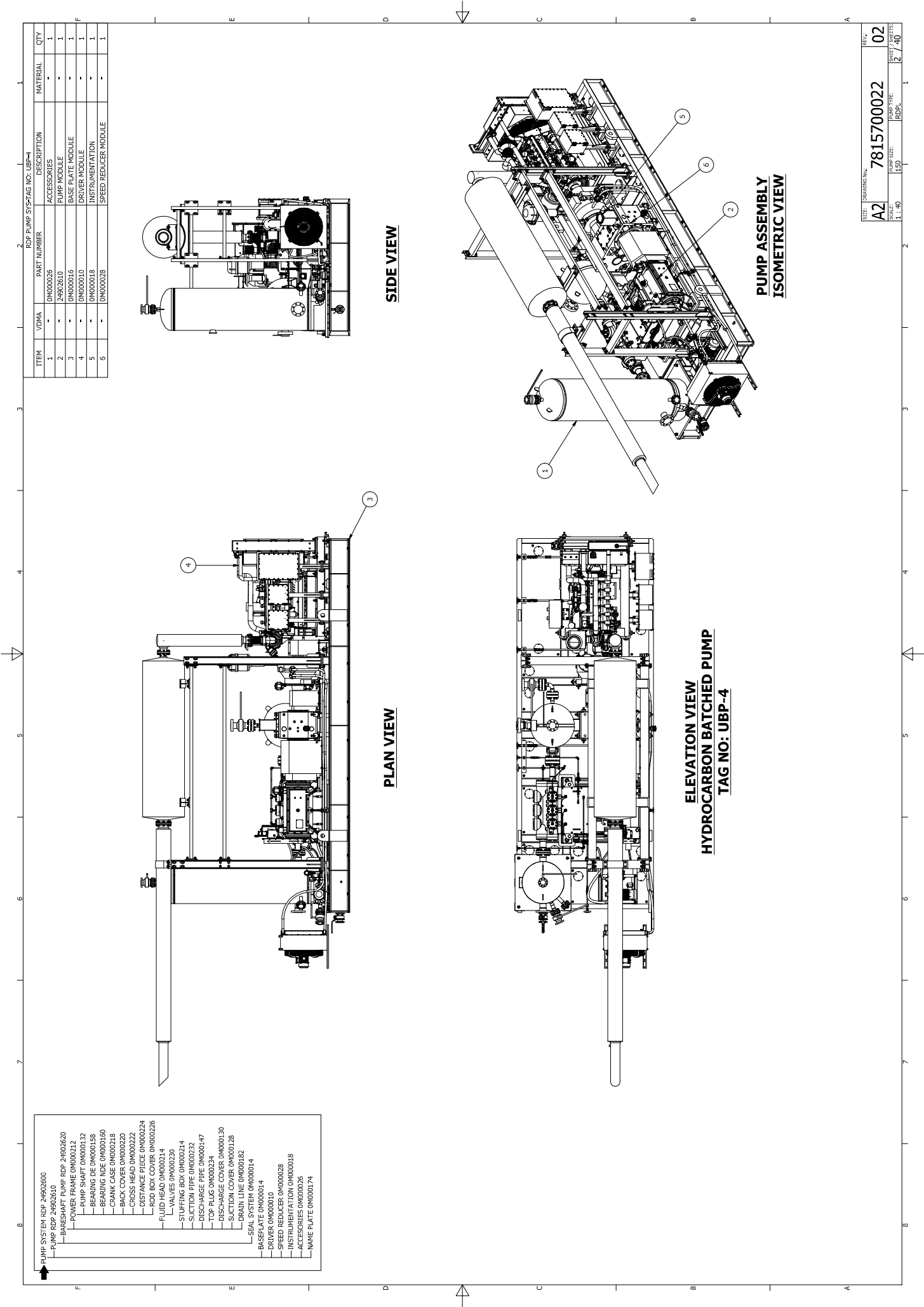
**APROBADO**

## Pump Sectional Drawing

Customer	YPFB TRANSPORTE S.A.				
Project	ADQUISICIÓN DE 2 UNIDADES DE BOMBEO PRINCIPALES PARA EL POLIDUCTO VILLAMONTES TARIJA (PVT)				
Purchase Order Number	151006962				
Tag Number	UBP-4 (VILLAMONTES) UBP-3 (ENTRE RÍOS)				
Pump Type/Size	RDPL 150				
Ruhrpumpen Pump Number	157400003A (VILLAMONTES) 157400003B (ENTRE RÍOS)				
Document Number	157400003-003	Date	28-05-2021	Rev	00







- PUMP SYSTEM RUP 24902600
- PUMP RDP 24902610
- BARESHAFT PUMP RDP 24902620
- POWER FRAME 0M000212
- PUMP SHAFT 0M000132
- BEARING DE 0M000158
- BEARING NDE 0M000160
- CRANK CASE 0M000218
- CRANK COVER 0M000220
- CROSS HEAD 0M000222
- DISTANCE PIECE 0M000224
- ROD BOX COVER 0M000226
- FLUID HEAD 0M000214
- VALVES 0M000230
- STUFFING BOX 0M000214
- SUCTION PIPE 0M000232
- DISCHARGE PIPE 0M000147
- TOP PLUG 0M000234
- DISCHARGE COVER 0M000130
- SUCTON COVER 0M000128
- DRAIN LINE 0M000162
- SEAL SYSTEM 0M00014
- BASE PLATE 0M00014
- SPEED REDUCER 0M000038
- INSTRUMENTATION 0M000018
- ACCESSORIES 0M000025
- NAME PLATE 0M000174

PLAN VIEW

SIDE VIEW

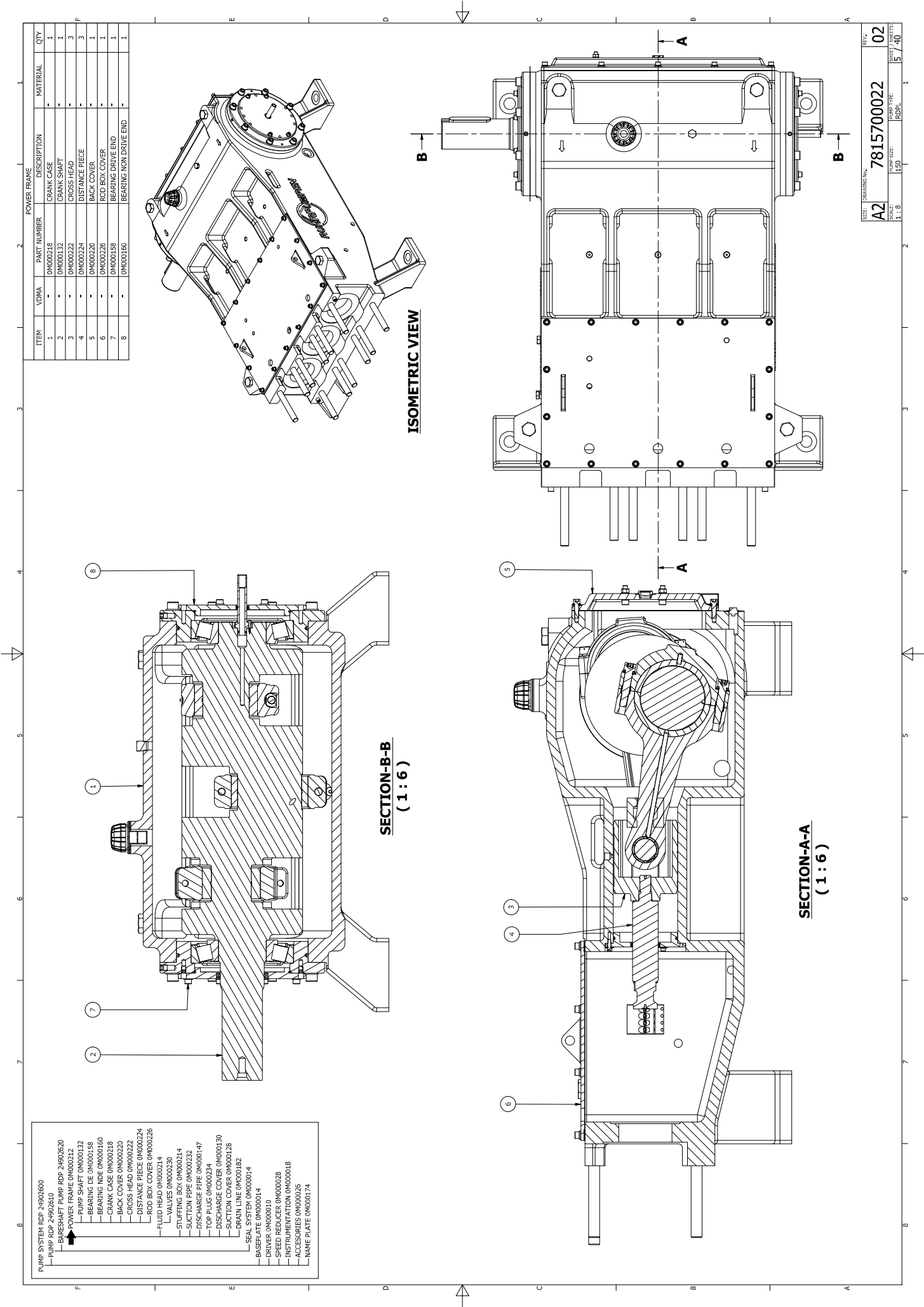
ELEVATION VIEW  
HYDROCARBON BATCHED PUMP  
TAG NO: UBIP-4

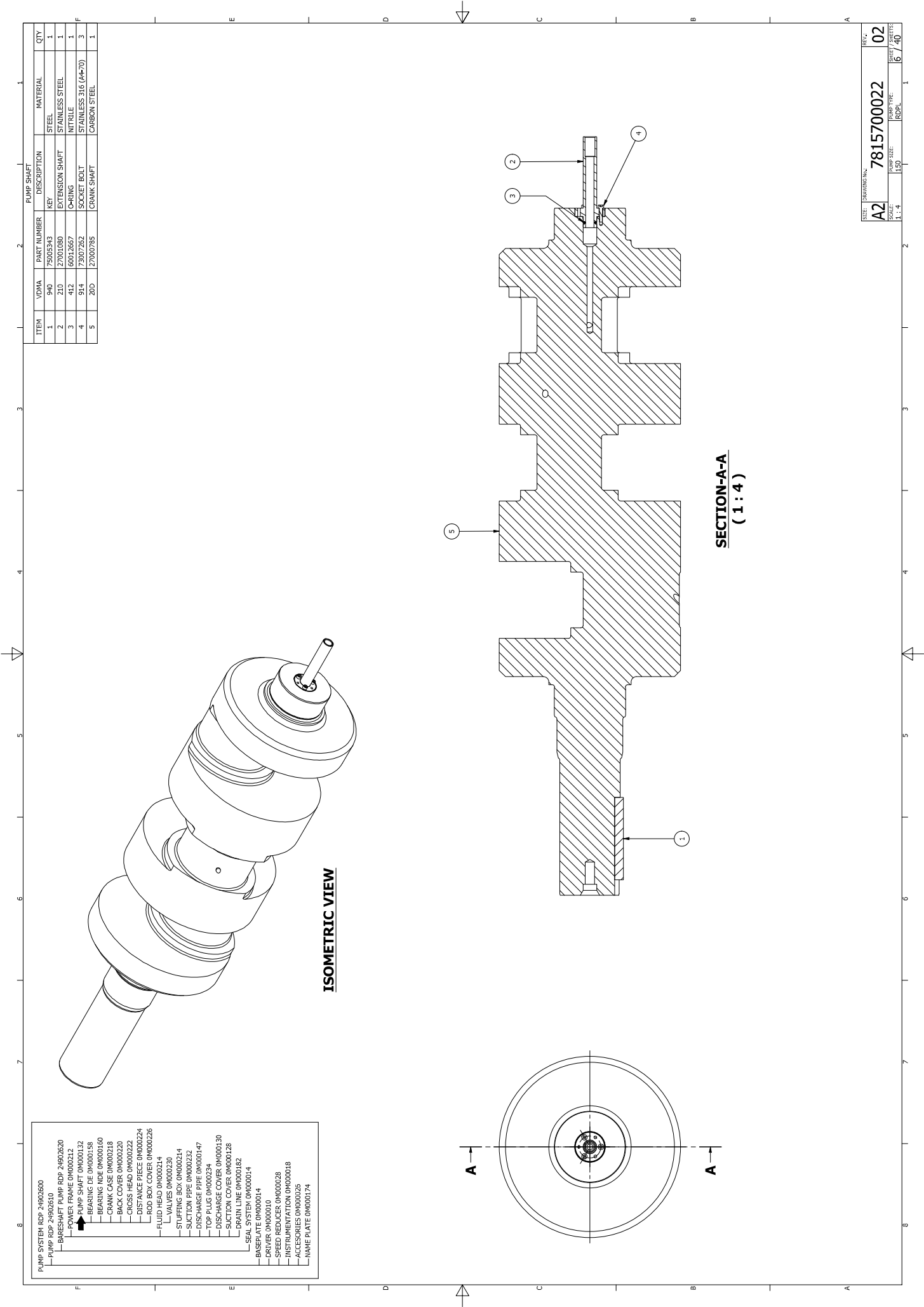
PUMP ASSEMBLY  
ISOMETRIC VIEW

REV:	7815700022	02
A2		
SCALE:	PUMP SIZE:	PUMP TYPE:
1 : 40	150	RDH
		2 / 40







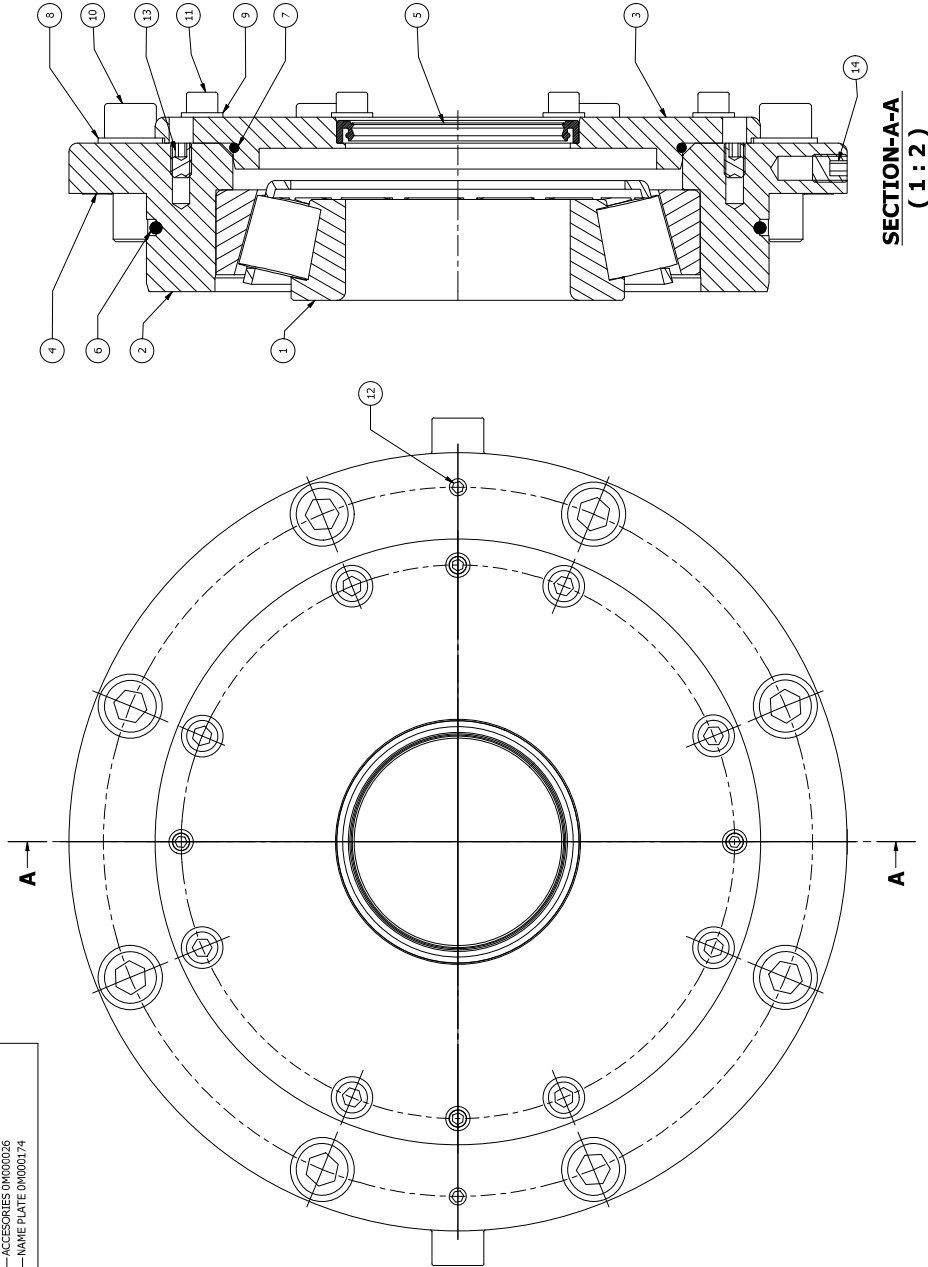


- PUMP SYSTEM RDP 24902600
- PUMP RDP 24902610
  - PUMP SHAFT RDP 24902620
  - POWER FRAME 0M000212
  - PUMP SHAFT 0M000132
  - BEARING RDP 0M000158
  - BEARING RDP 0M000160
  - CRANK CASE 0M000218
  - CRANK CASE 0M000220
  - CROSS HEAD 0M000222
  - CRANK CASE 0M000224
  - CRANK CASE 0M000226
  - FLUID HEAD 0M000230
  - VALVES 0M000234
  - STUFFING BOX 0M000238
  - SUCTION PIPE 0M000242
  - DISCHARGE PIPE 0M000246
  - TOP PLUG 0M000250
  - DISCHARGE COVER 0M000254
  - SUCTION COVER 0M000258
  - DRAIN LINE 0M000262
  - SEAL SYSTEM 0M000266
  - BASE PLATE 0M000270
  - DRIVER 0M000274
  - SPEED REDUCER 0M000278
  - INSTRUMENTATION 0M000282
  - ACCESSORIES 0M000286
  - NAME PLATE 0M000290

ITEM	QTY	PUMP SHAFT	DESCRIPTION	MATERIAL
1	1	75005343	KEY	STEEL
2	1	27001080	EXTENSION SHAFT	STAINLESS STEEL
3	1	60012657	CRANK	INTRILE
4	3	73007852	SOCKET BOLT	STAINLESS 316 (A4-70)
5	1	27000795	CRANK SHAFT	CARBON STEEL

REV.	02	7815700022	7815700022
A2	1:4	150	150
SCALE	1:4	PUMP SIZE	RDPL
1:4	6	40	40
1:4	6	40	40

ITEM	VDMA	PART NUMBER	DESCRIPTION	MATERIAL	QTY
1	300	6603512	BEARING CAP DE	STEEL	1
2	360	2303189	BEARING CAP DE	STEEL	1
3	360	2303940	BEARING CAP DE	STEEL	1
4	551	2500492	BEARING CAP SHIM KIT	STAINLESS STEEL	1
5	420	61001278	LIP SEAL	RUBBER	1
6	412	60014331	O-RING	NBR	1
7	412	60014771	O-RING	NBR	1
8	554	74001263	PLAIN WASHER	STAINLESS STEEL	8
9	554	74002892	PLAIN WASHER	STAINLESS STEEL	8
10	914	73008150	SOCKET HEAD BOLT	STAINLESS STEEL	8
11	914	73007071	SOCKET HEAD CAP BOLT	STAINLESS STEEL	8
12	904	73005748	SOCKET SET SCREW	STAINLESS STEEL	2
13	904	73000331	SOCKET SET SCREW	STAINLESS STEEL	4
14	904	73012627	SOCKET SET SCREW	STAINLESS STEEL	1



ISOMETRIC VIEW

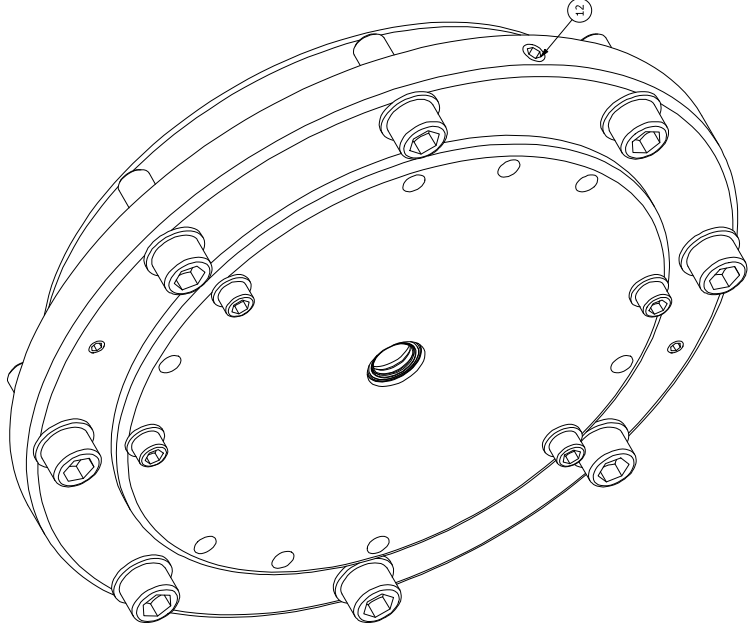
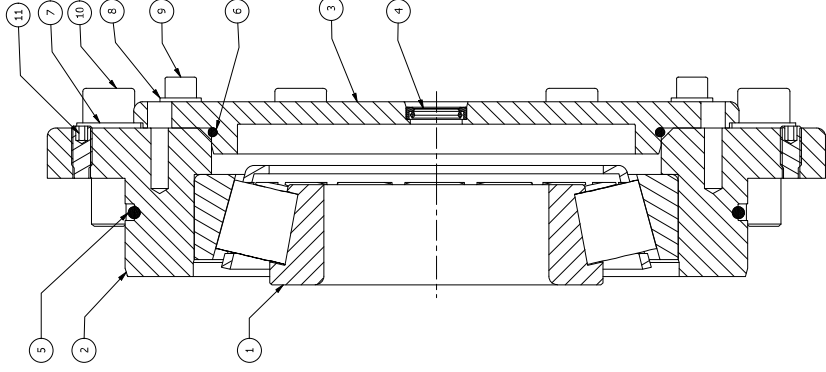
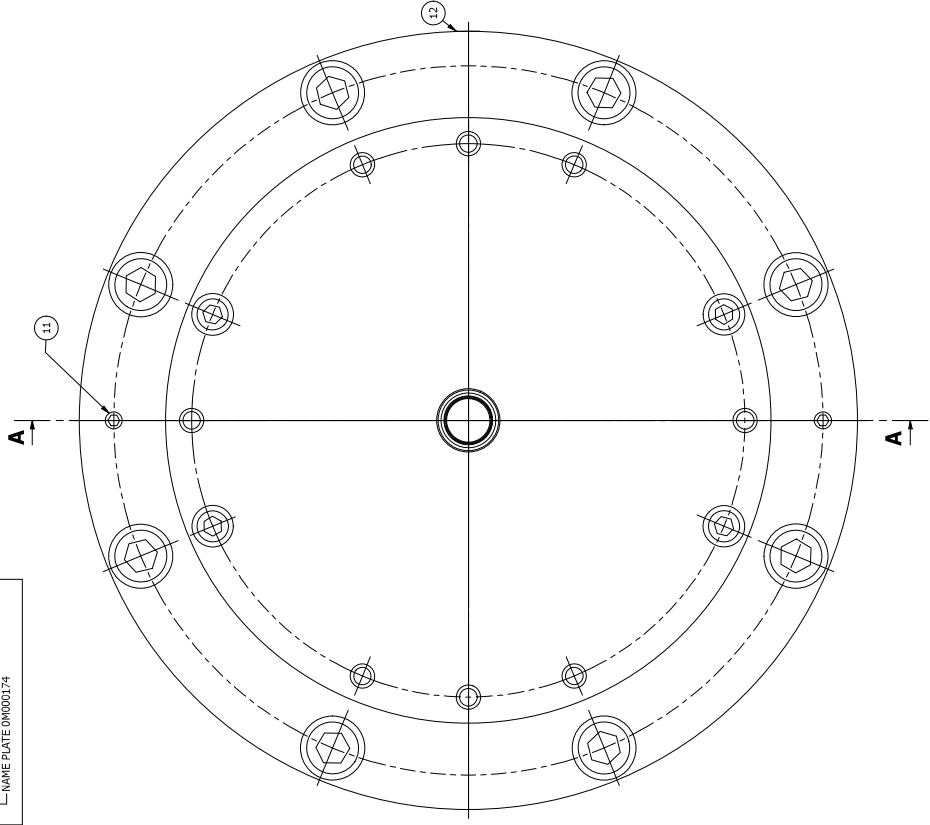
SECTION-A-A  
(1 : 2)

SIZE	DRAWING NO.	REV.
A2	7815700022	02
SCALE	PUMP SIZE	SHEET / TOTAL
1 : 2	150	7 / 40



ITEM	VDMA	PART NUMBER	DESCRIPTION	MATERIAL	QTY
1	300	6800512	BEARING	STEEL	1
2	360	73003189	BEARING CAP DE	STEEL	1
3	360	73003941	BEARING CAP DE	STEEL	1
4	421	61001730	LIP SEAL	NBR/STEEL	1
5	412	60014331	O-RING	NBR	1
6	412	60014771	O-RING	NBR	1
7	554	74001263	PLAIN WASHER	STAINLESS STEEL	8
8	554	74002892	PLAIN WASHER	STAINLESS STEEL	8
9	914	73007071	SOCKET HEAD CAP BOLT	STAINLESS STEEL	4
10	914	73007836	SOCKET HEAD CAP SCREW	STAINLESS STEEL	8
11	904	73009748	SOCKET SET SCREW	STAINLESS STEEL	2
12	904	73012527	SOCKET SET SCREW	STAINLESS STEEL	1

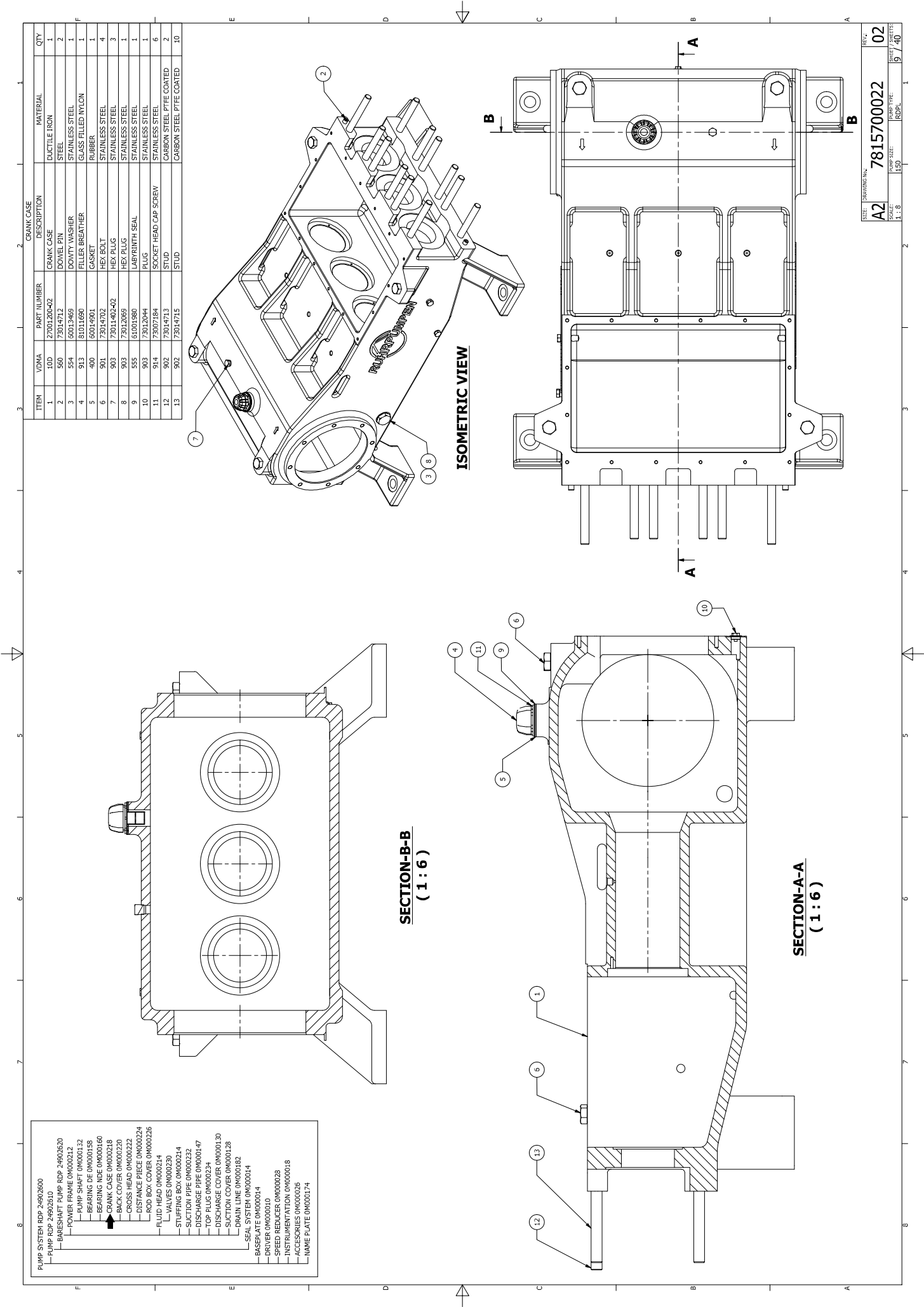
PUMP SYSTEM RDP 24002600
— PUMP RDP 24002351
— BASE SHAFT PUMP RDP 24002620
— PUMP FRAME 0M000132
— PUMP SHAFT 0M000132
— BEARING DE 0M000158
— BEARING NOE 0M000160
— CRANK CASE 0M000218
— BACK COVER 0M000220
— CROSS HEAD 0M000222
— DISTANCE PIECE 0M000224
— ROD BOX COVER 0M000226
— FLUID HEAD 0M000234
— VALVES 0M000230
— STUFFING BOX 0M000214
— SUCTION PIPE 0M000232
— DISCHARGE PIPE 0M000147
— TOP PLUG 0M000234
— DISCHARGE COVER 0M000130
— SUCTION COVER 0M000128
— DRAIN LINE 0M000182
— SEAL SYSTEM 0M000014
— BASE PLATE 0M000014
— DRIVER 0M000010
— SPEED REDUCER 0M000028
— INSTRUMENTATION 0M000018
— ACCESSORIES 0M000026
— NAME PLATE 0M000174

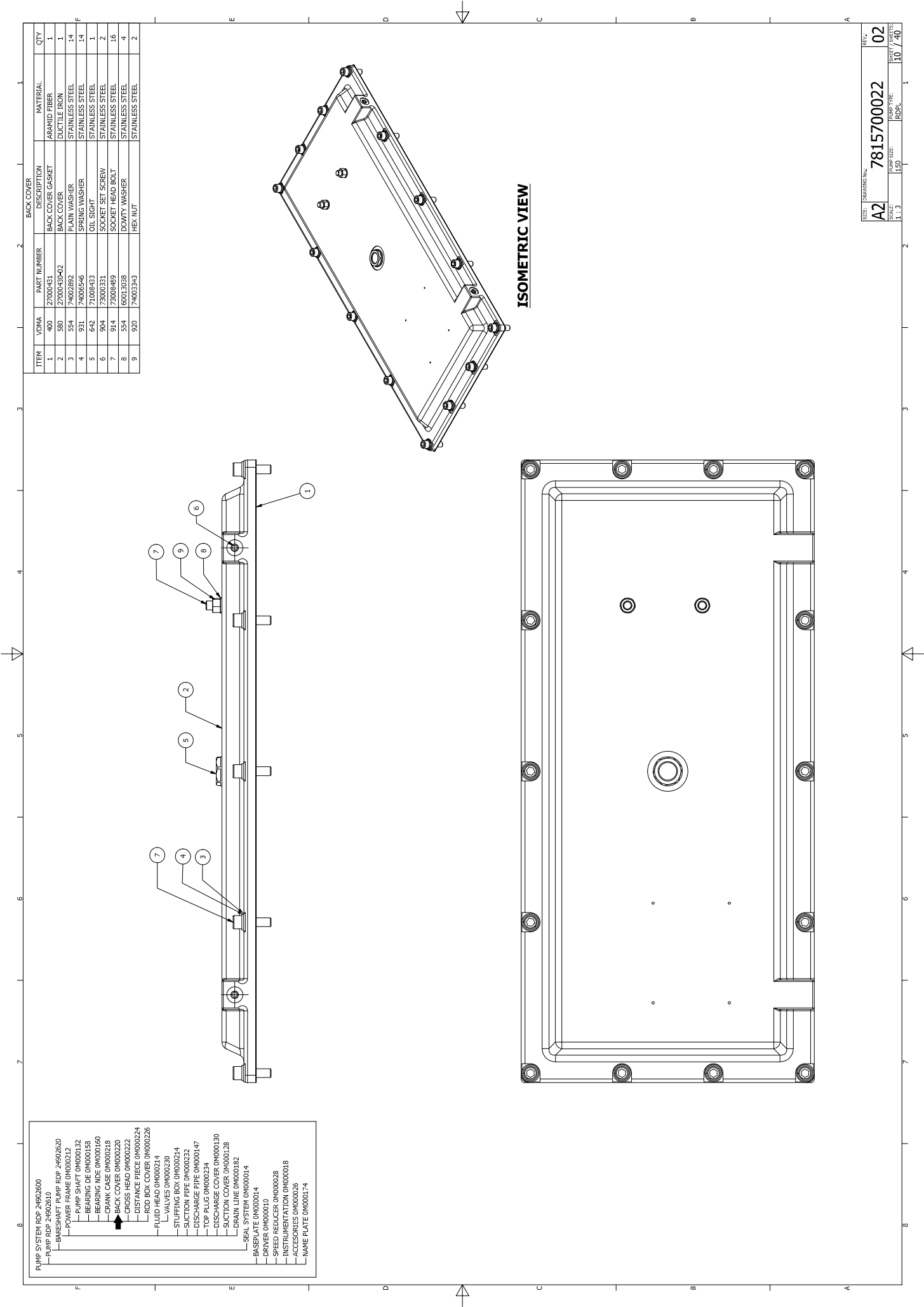


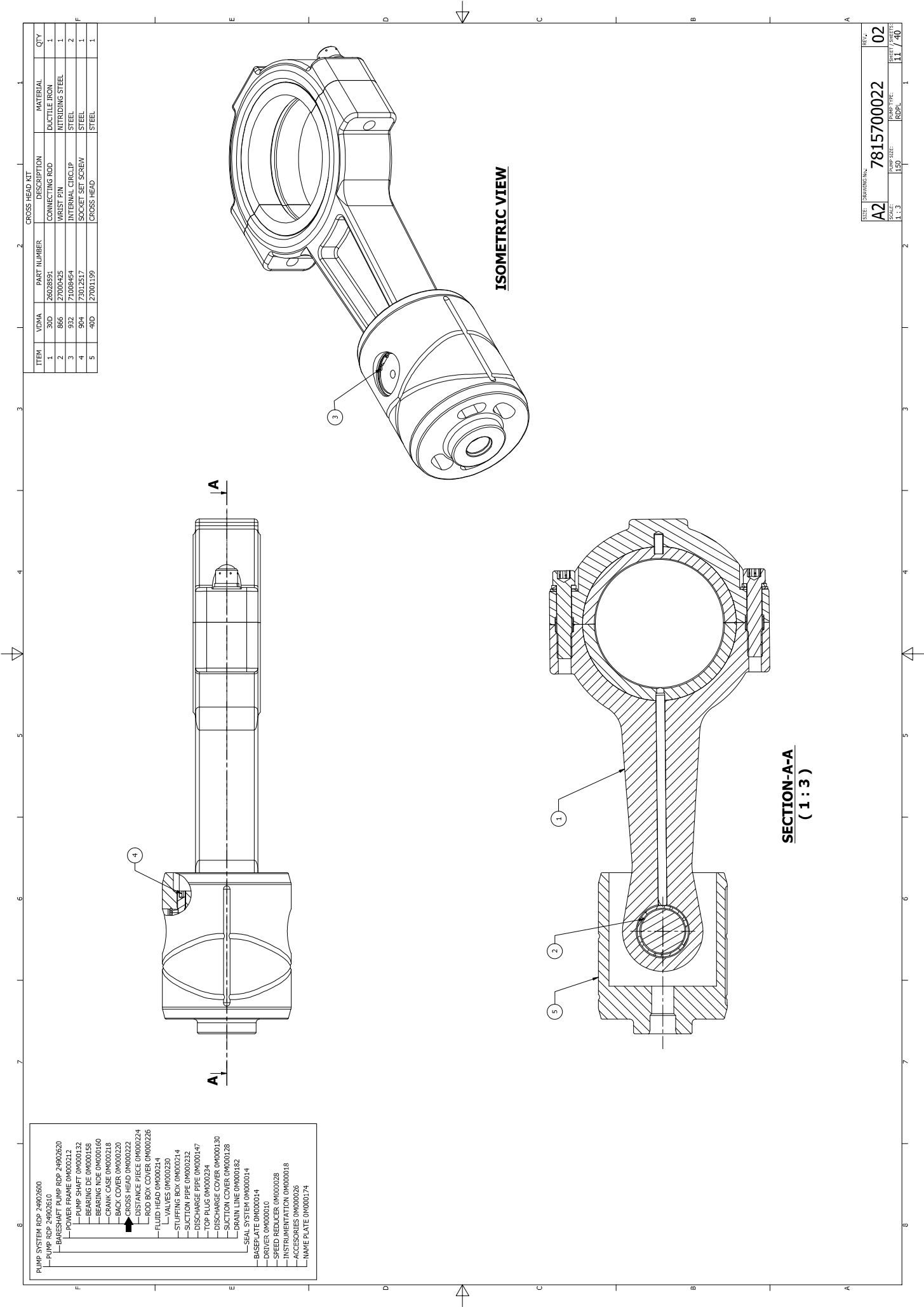
ISOMETRIC VIEW

SECTION-A -A  
(1 : 2)

SYMBOL	DRAWING NO.	REV.
A2	7815700022	02
SCALE	PUMP SIZE	DRW. / SHEETS
1:1, 2	150	8 / 40





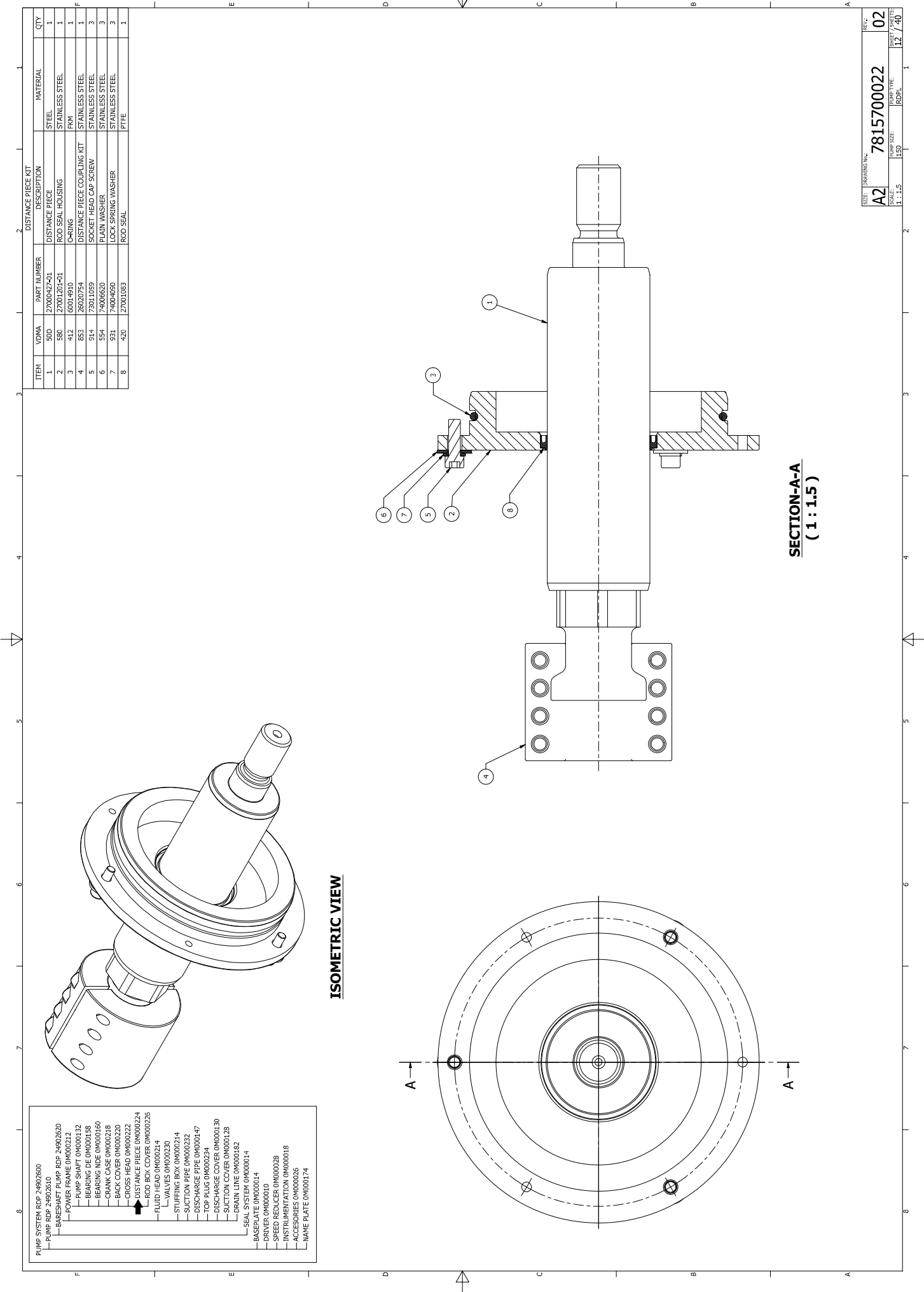


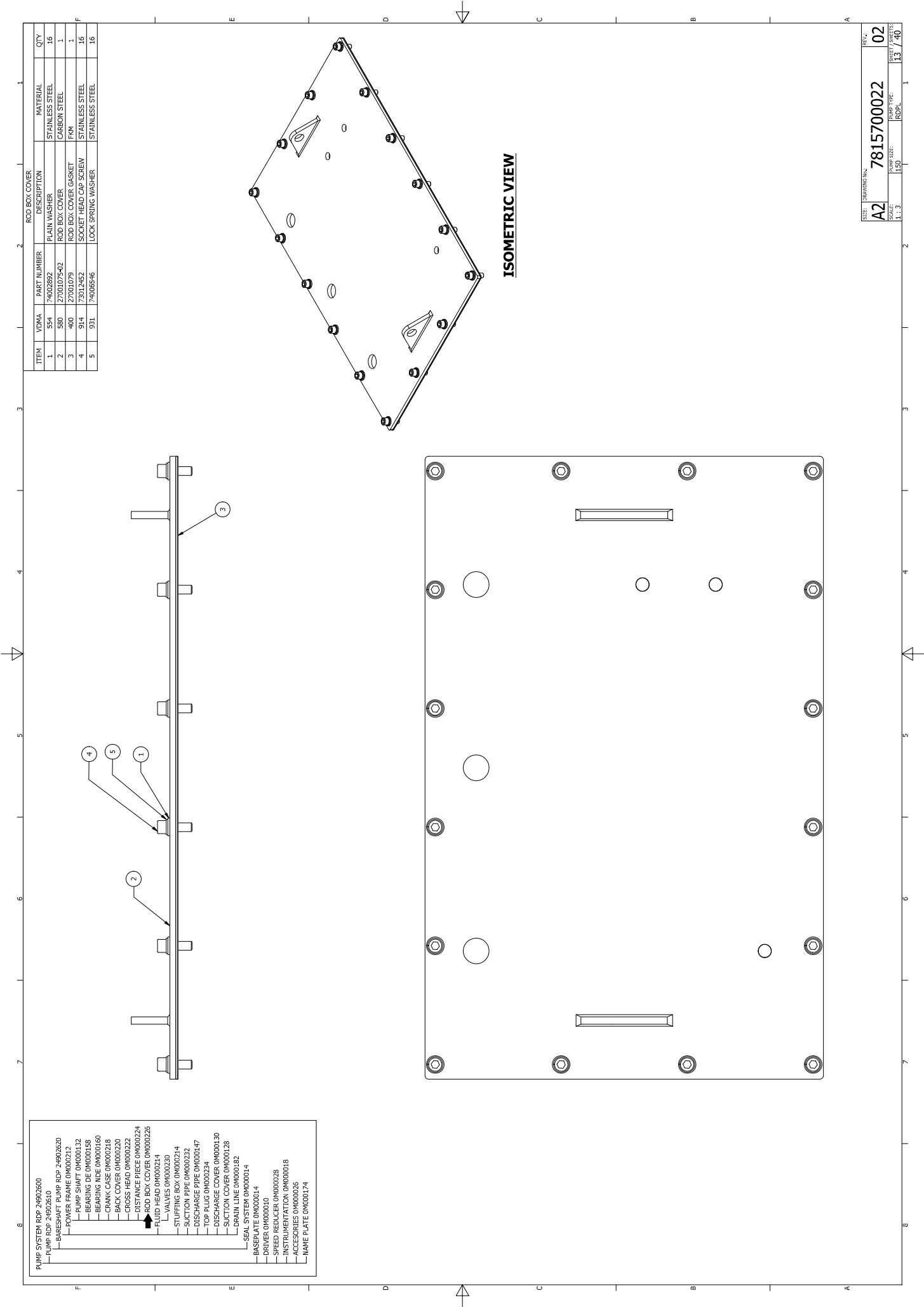
- PUMP SYSTEM RDP 24902600  
PUMP RDP 24902610  
BASESHEET PUMP RDP 24902620  
POWER FRAME 0M000132  
PUMP SHAFT 0M000132  
BEARING DE 0M000158  
BEARING ICE 0M000160  
CRANK CASE 0M000218  
BACK COVER 0M000220  
CROSS HEAD 0M000222  
DISTANCE PIECE 0M000224  
ROD BOX COVER 0M000226  
FLUID HEAD 0M000230  
VALVES 0M000234  
STUFFING BOX 0M000234  
SUCTION PIPE 0M000232  
DISCHARGE PIPE 0M000147  
TOP PLUG 0M000234  
DISCHARGE COVER 0M000130  
SUCTION COVER 0M000128  
DRAIN LINE 0M000182  
SEAL SYSTEM 0M000114  
BASE PLATE 0M000114  
DRIVER 0M000010  
SPEED REDUCER 0M000028  
INSTRUMENTATION 0M000018  
ACCESSORIES 0M000026  
NAME PLATE 0M000174

ITEM	VDNA	PART NUMBER	DESCRIPTION	MATERIAL	QTY
1	30D	26028591	CONNECTING ROD	DUCTILE IRON	1
2	866	27000425	WRIST PIN	NITRIDING STEEL	1
3	932	71008464	INTERNAL CIRCLIP	STEEL	2
4	944	73012517	SOCKET SET SCREW	STEEL	1
5	40D	27001199	CROSS HEAD	STEEL	1

ISOMETRIC VIEW

SECTION-A-A  
( 1 : 3 )





- PUMP SYSTEM RDP 24002600
- PUMP RDP 24002600
  - BASESHAFT PUMP RDP 24002600
  - PUMP FRAME 0M000132
  - PUMP SHAFT 0M000132
  - BEARING DE 0M000158
  - BEARING NDE 0M000160
  - CRANK CASE 0M000218
  - BACK COVER 0M000220
  - CROSS HEAD 0M000222
  - DISTANCE PIECE 0M000224
  - ROD BOX COVER 0M000225
  - FLUID HEAD 0M000230
  - VALVES 0M000230
  - STUFFING BOX 0M000234
  - SUCTION PIPE 0M000232
  - DISCHARGE PIPE 0M000147
  - TOP PLUG 0M000234
  - DISCHARGE COVER 0M000130
  - SUCTION COVER 0M000128
  - DRAIN LINE 0M000182
  - SEAL SYSTEM 0M000014
  - BASEPLATE 0M000014
  - DRIVER 0M000010
  - SPEED REDUCER 0M000028
  - INSTRUMENTATION 0M000018
  - ACCESSORIES 0M000026
  - NAME PLATE 0M000174

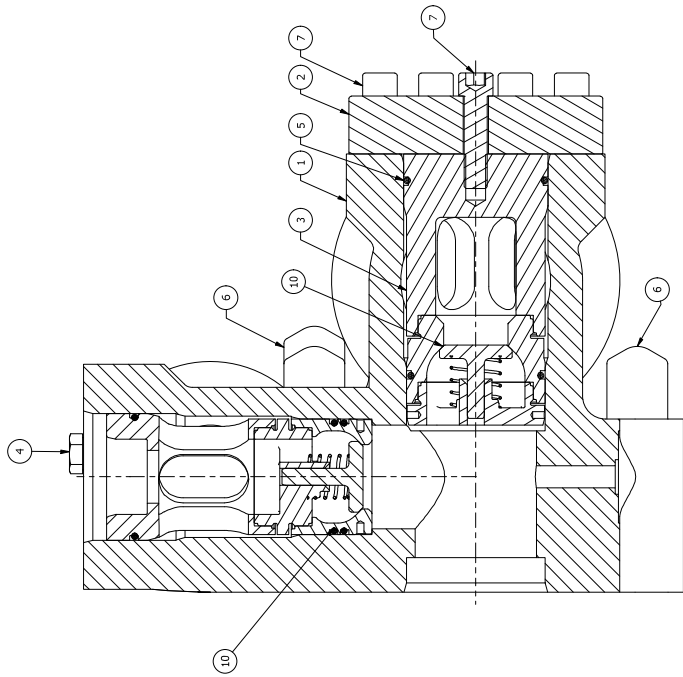
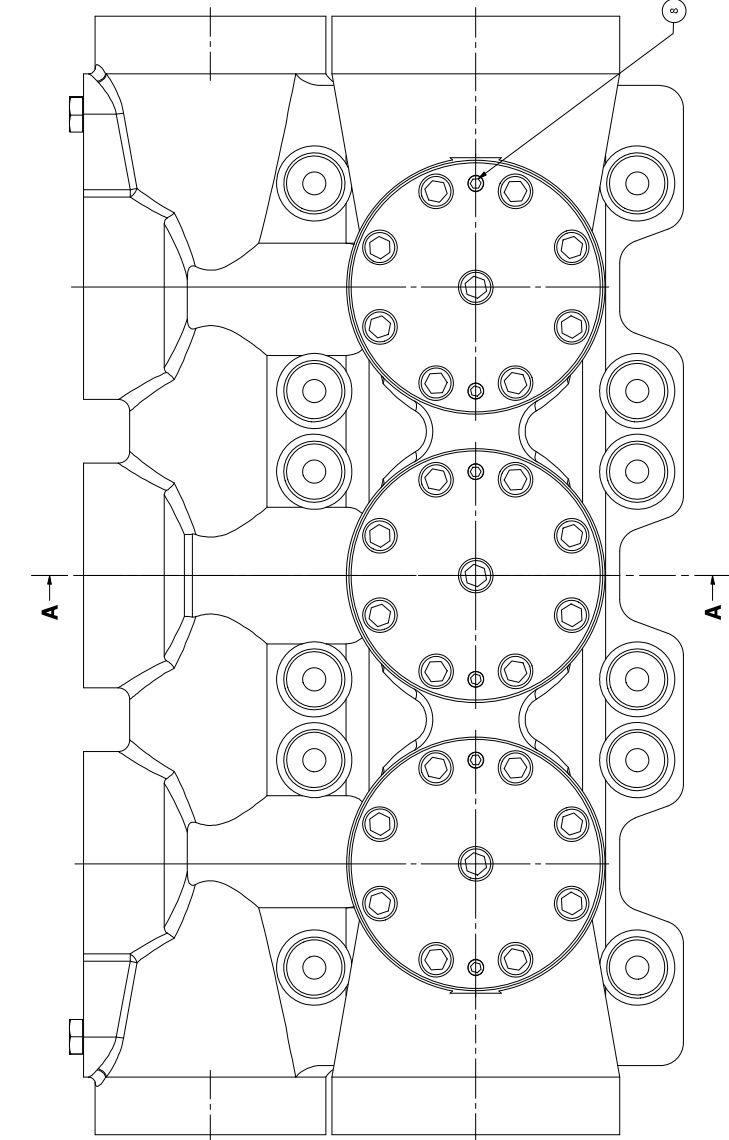
ITEM	VDMA	PART NUMBER	DESCRIPTION	MATERIAL	QTY
1	554	74002892	PLAIN WASHER	STAINLESS STEEL	16
2	580	27001075-02	ROD BOX COVER	CARBON STEEL	1
3	400	27001079	ROD BOX COVER GASKET	FKM	1
4	914	73012452	SOCKET HEAD CAP SCREW	STAINLESS STEEL	16
5	931	74006546	LOCK SPRING WASHER	STAINLESS STEEL	16

REF:	02
7815700022	
A2	
SCALE:	1:1
PUMP SIZE:	150
RDPL TYPE:	RDPL
PAGES / SHEETS	13 / 40

ITEM	VDMA	PART NUMBER	DESCRIPTION	FLUID HEAD	MATERIAL	QTY
1	20W	2700.081-426	FLUID HEAD		CARBON STEEL	1
2	160	2700.087-2401	FRONT COVER		STAINLESS STEEL	3
3	916	2700.106-401	FRONT INNER PLUG		STAINLESS STEEL	2
4	901	7301-4701	HEX HEAD SCREW		STAINLESS STEEL	2
5	412	6001-4739	ORING		FKM	3
6	633	8101-4880	PROTECTIVE CAP		PLASTIC	12
7	914	7300.0897	SOCKET HEAD CAP BOLT		STAINLESS STEEL	27
8	904	7301-4700	SOCKET SET SCREW		STAINLESS STEEL	6
9	920	7400.3952	TENSION NUT		ALLOY STEEL	12
10	-	0M000230	VALVE MODULE		-	1

PUMP SYSTEM RDP 24902600
— PUMP RDP 24902610
— BARESHAFT PUMP RDP 24902620
— POWER FRAME 0M000212
— PUMP SHAFT 0M000132
— BEARING DE 0M000158
— BEARING NDE 0M000160
— CRANK CASE 0M000218
— BACK COVER 0M000220
— CROSS HEAD 0M000222
— DISTANCE PIECE 0M000224
— ROD BOX COVER 0M000226
— FLUID HEAD 0M000214
— VALVES 0M000230
— STUFFING BOX 0M000214
— SUCTION PIPE 0M000232
— DISCHARGE PIPE 0M000147
— TOP PLUG 0M000234
— DISCHARGE COVER 0M000130
— SUCTION COVER 0M000128
— DRAIN LINE 0M000182
— SEAL SYSTEM 0M000014
— BASEPLATE 0M000014
— DRIVER 0M000010
— SPEED REDUCER 0M000028
— INSTRUMENTATION 0M000018
— ACCESSORIES 0M000026
— NAME PLATE 0M000174

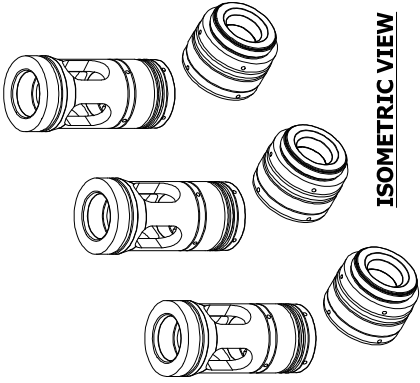
ISOMETRIC VIEW



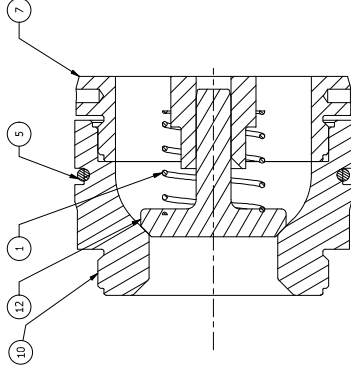
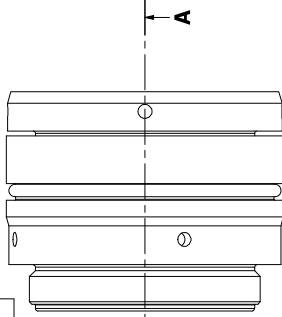
SECTION-A-A  
(1 : 3)

REF:	7815700022	REV:	02
A2			
SCALE:	1 : 3	PUMP TYPE:	RDH
		PUMP SIZE:	150
			14 / 40

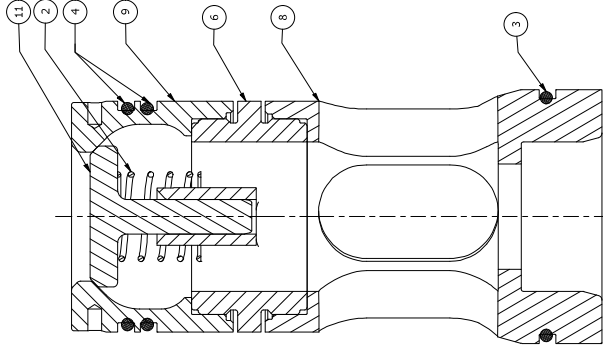
- PUMP SYSTEM RDP 24003600  
PUMP RDP 24003610  
— BASE SHAFT PUMP RDP 24003620  
— POWER FRAME OM000112  
— PUMP SHAFT OM000132  
— BEARING DE OM000158  
— BEARING INDE OM000160  
— CRANK CASE OM000218  
— BACK COVER OM000220  
— CROSS HEAD OM000222  
— DISTANCE PIECE OM000224  
— ROD BOX COVER OM000226  
— FLUID VALVES OM000230  
— STUFFING BOX OM000214  
— SUCTION PIPE OM000232  
— DISCHARGE PIPE OM000147  
— TOP PLUG OM000234  
— DISCHARGE COVER OM000130  
— SUCTION COVER OM000128  
— DRAIN LINE OM000182  
— SEAL SYSTEM OM000014  
— BASE PLATE OM000014  
— DRIVER OM000010  
— SPEED REDUCER OM000028  
— INSTRUMENTATION OM000018  
— ACCESSORIES OM000026  
— NAME PLATE OM000174



ISOMETRIC VIEW



SECTION-A-A  
SUCTION VALVE  
( 1 : 1.5 )



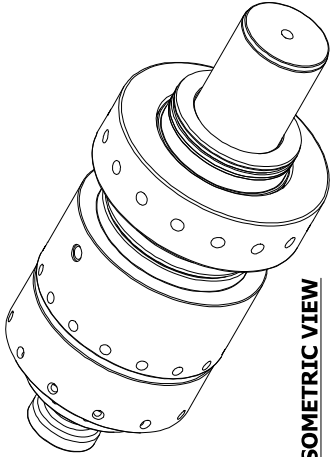
SECTION-B-B  
DISCHARGE VALVE  
( 1 : 1.5 )

VALVES			
ITEM	VDMA	PART NUMBER	DESCRIPTION
1	950	6505208	HELICAL SPRING
2	950	6505209	HELICAL SPRING
3	412	60014740	GRING
4	412	60014741	GRING
5	412	60014440	O-RING
6	483	27001175-01	SPRING CAGE, DISCHARGE
7	483	27001177-01	SPRING CAGE, SUCTION
8	916	27001173-01	TOP INNER PLUG
9	752	27017571-02	VALVE SEAT, DISCHARGE
10	752	27017572-02	VALVE SEAT, SUCTION
11	741	27000868-02	VALVE, DISCHARGE
12	741	27000867-02	VALVE, SUCTION
			MATERIAL
			INCONEL
			INCONEL
			FKM
			FKM
			FKM
			STAINLESS STEEL
			STAINLESS STEEL
			STAINLESS STEEL
			STAINLESS STEEL
			STAINLESS STEEL 440-C
			STAINLESS STEEL 440-C

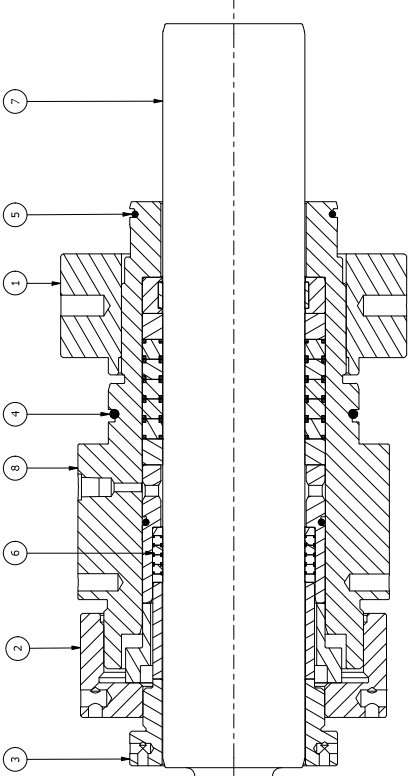
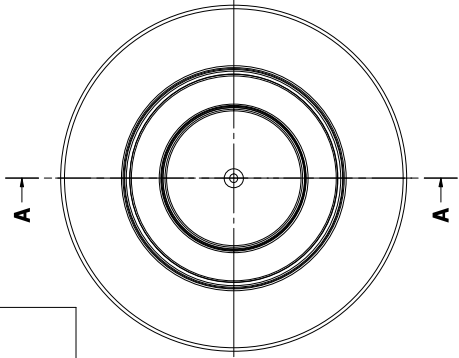
SIZE	DRAWING NO.	REV.
A2	7815700022	02
SCALE	PUMP SIZE	PUMP TYPE
1 : 1.5	150	RDHL
		SHEET / TOTAL
		15 / 40



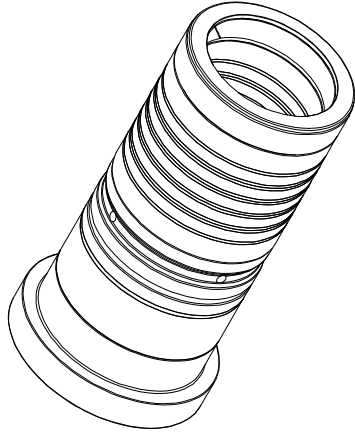
- PUMP SYSTEM RDP 24002600  
PUMP RDP 24002610  
— BAR/SHAFT PUMP RDP 24002620  
— PUMP FRAME OM000212  
— PUMP SHAFT OM000132  
— BEARING DE OM000158  
— BEARING NDE OM000160  
— CRANK CASE OM000218  
— BACK COVER OM000220  
— CROSS HEAD OM000222  
— DISTANCE PIECE OM000224  
— ROD BOX COVER OM000226  
— FLUID HEAD OM000234  
— VALVES OM000230  
— STUFFING BOX OM000214  
— SUCTION PIPE OM000232  
— DISCHARGE PIPE OM000147  
— TOP PLUG OM000234  
— DISCHARGE COVER OM000130  
— SUCTION COVER OM000128  
— DRAIN LINE OM000182  
— SEAL SYSTEM OM000014  
— BASEPLATE OM000014  
— DRIVER OM000010  
— SPEED REDUCER OM000028  
— INSTRUMENTATION OM000018  
— ACCESSORIES OM000026  
— NAME PLATE OM000174



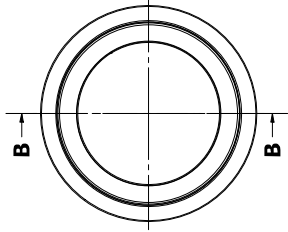
ISOMETRIC VIEW



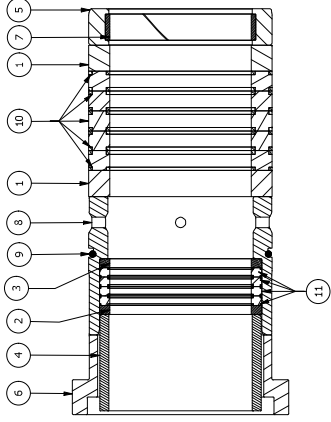
SECTION-A-A  
STUFFING BOX  
( 1 : 2 )



ISOMETRIC VIEW



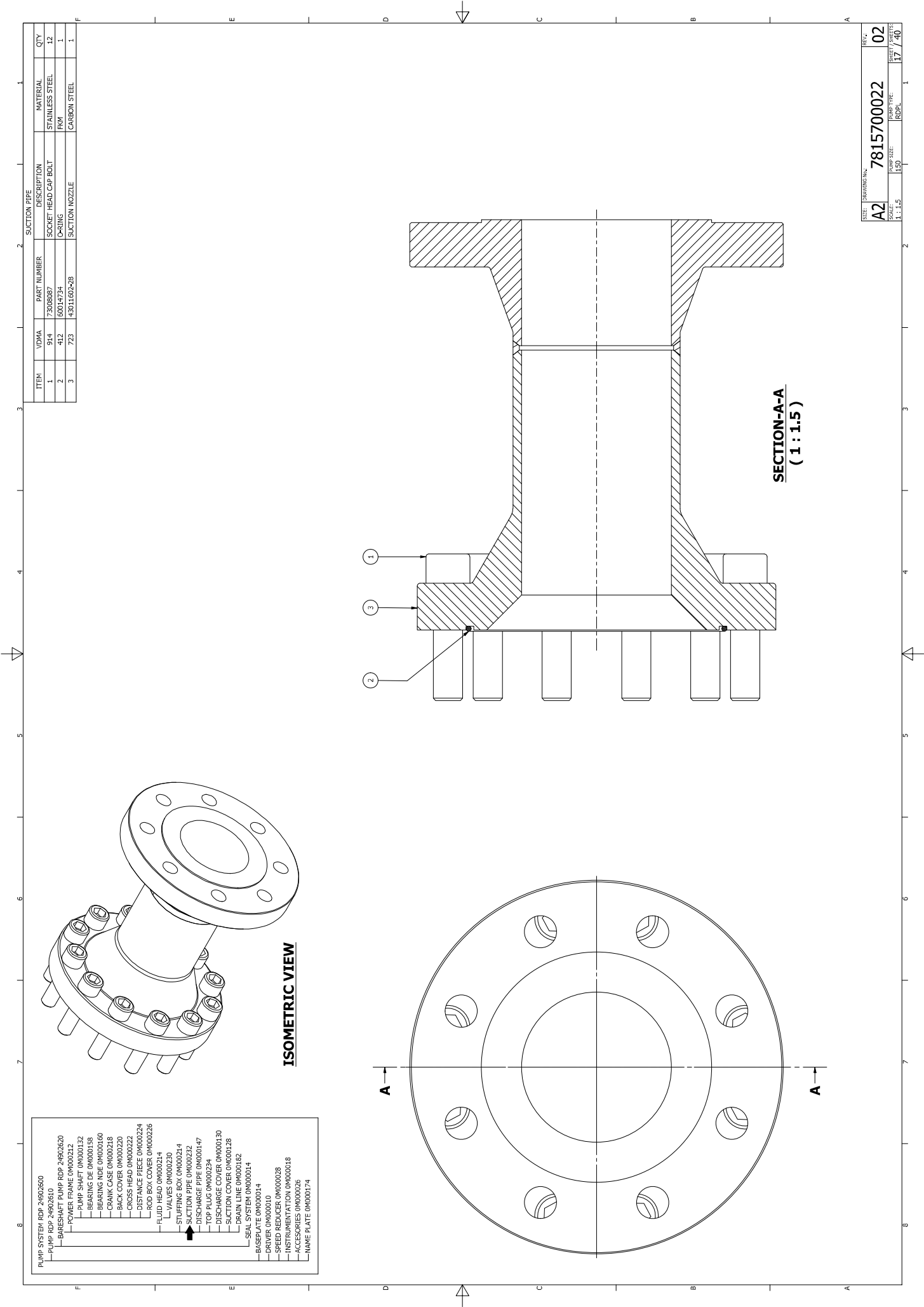
SECTION-B-B  
PACKING KIT  
( 1 : 2 )



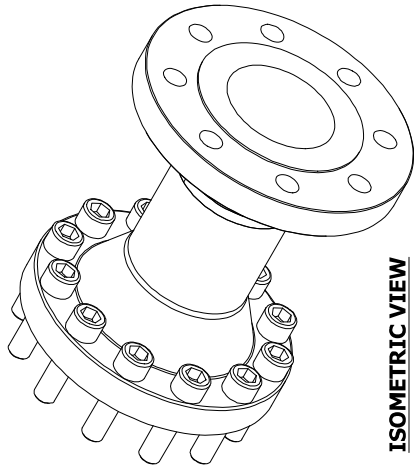
ITEM	VDMA	PART NUMBER	DESCRIPTION	MATERIAL	QTY
1	920	74007798	CLAMPING NUT	CARBON STEEL	1
2	453	62001847-42	GLAND NUT	CARBON STEEL	1
3	453	62001849-42	GLAND NUT	CARBON STEEL	1
4	412	60010649	O-RING	FKM	1
5	412	60014726	O-RING	FKM	1
6	457	25004539	PACKING KIT	-	1
7	30W	27001096-401	PLUNGER	STAINLESS STEEL	1
8	451	16006221-401	STUFFING BOX	STAINLESS STEEL	1

ITEM	VDMA	PART NUMBER	DESCRIPTION	MATERIAL	QTY
1	450	27001089	ANTI EXTRUSION RING	PEEK	2
2	450	27001158	ANTI EXTRUSION RING	PEEK	1
3	450	27001256	ANTI EXTRUSION RING	PEEK	1
4	450	27001203	GLAND RING	STAINLESS 316	1
5	450	62001843-01	GLAND RING	STAINLESS STEEL	1
6	450	62001844-01	GLAND RING	STAINLESS STEEL	1
7	545	86008437	GUIDE TAPE RING	PTFE/BRONZE/MS2	1
8	458	71009438-01	LANTERN RING	STAINLESS STEEL	1
9	412	60014909	O-RING	FKM	1
10	457	60014904	PACKING RING	PTFE/GRAPHITE/KEVLAR	5
11	457	60014908	PACKING RING	PTFE/GRAPHITE/KEVLAR	4

REF:	7815700022	02
A2	1:1	16 / 40
SCALE:	1:1	1:1
PUMP TYPE:	150	150
ROPL:	1:1	1:1



- PUMP SYSTEM RDP 24902600
- PUMP RDP 24902610
  - PUMP FRAME 0M000212
  - PUMP SHAFT 0M000132
  - BEARING DE 0M000135
  - BEARING NDE 0M000160
  - CRANK CASE 0M000218
  - BACK COVER 0M000220
  - DISCHARGE COVER 0M000224
  - DISTANCE PIECE 0M000226
  - ROD BOX 0M000214
  - FLUID HEAD 0M000210
  - VALVES 0M000230
  - STUFFING BOX 0M000314
  - SUCTION PIPE 0M000232
  - DISCHARGE PIPE 0M000147
  - TOP PLUG 0M000234
  - DISCHARGE COVER 0M000130
  - SUCTION COVER 0M000128
  - DRAIN LINE 0M000182
  - SEAL SYSTEM 0M000014
  - BASEPLATE 0M000014
  - DRIVER 0M000010
  - SPEED REDUCER 0M000028
  - INSTRUMENTATION 0M000018
  - ACCESSORIES 0M000026
  - NAME PLATE 0M000174

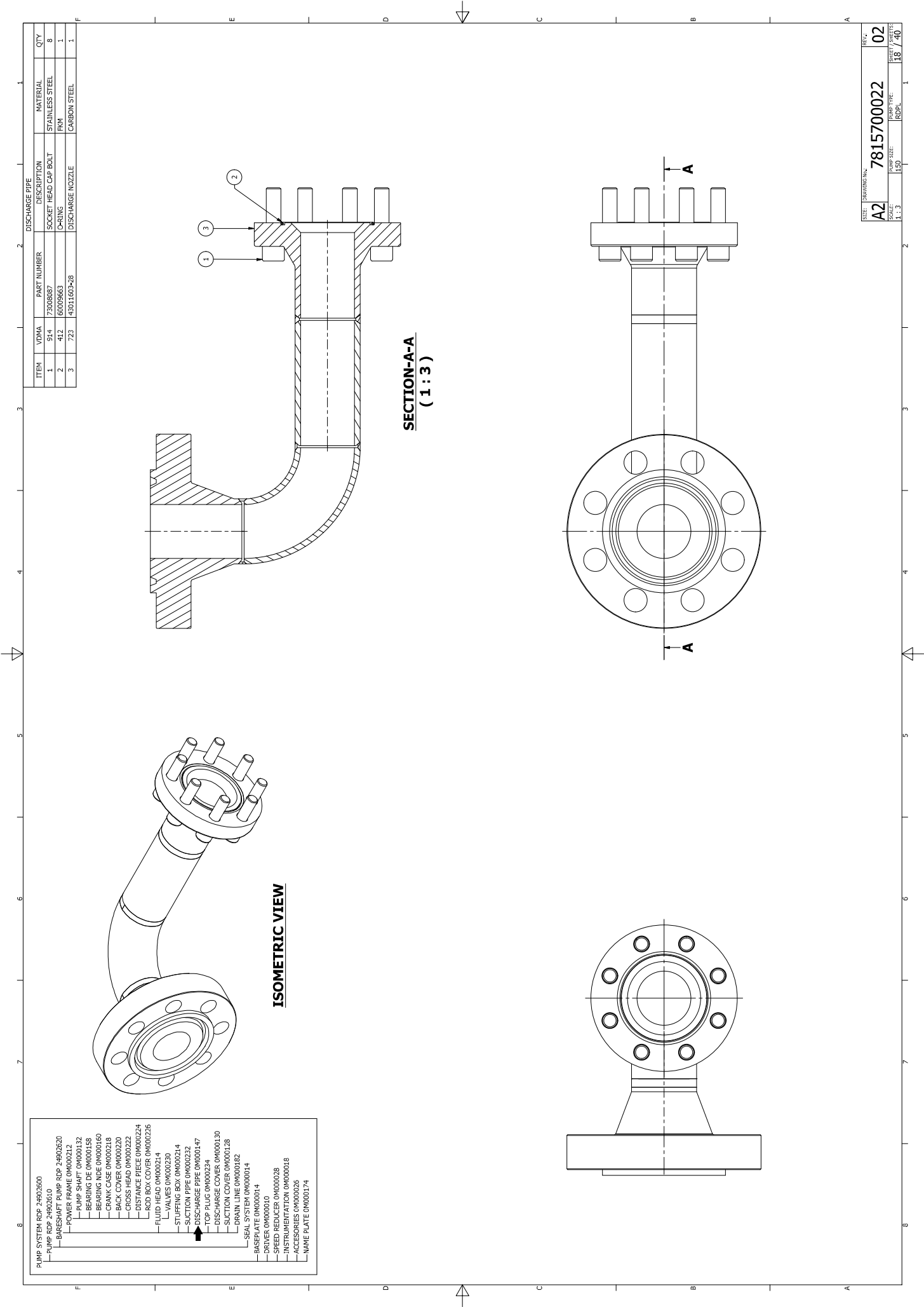


ISOMETRIC VIEW

SECTION-A-A  
( 1 : 1.5 )

ITEM	UDMA	PART NUMBER	DESCRIPTION	MATERIAL	QTY
1	914	7308087	SOCKET HEAD CAP BOLT	STAINLESS STEEL	12
2	412	60014734	ORING	FRM	1
3	723	4301160248	SUCTION NOZZLE	CARBON STEEL	1

SYN	DRAWING NO.	REV.
A2	7815700022	02
SCALE	PUMP SIZE	PUMP TYPE
1 : 1.5	150	RDHL
		17 / 40



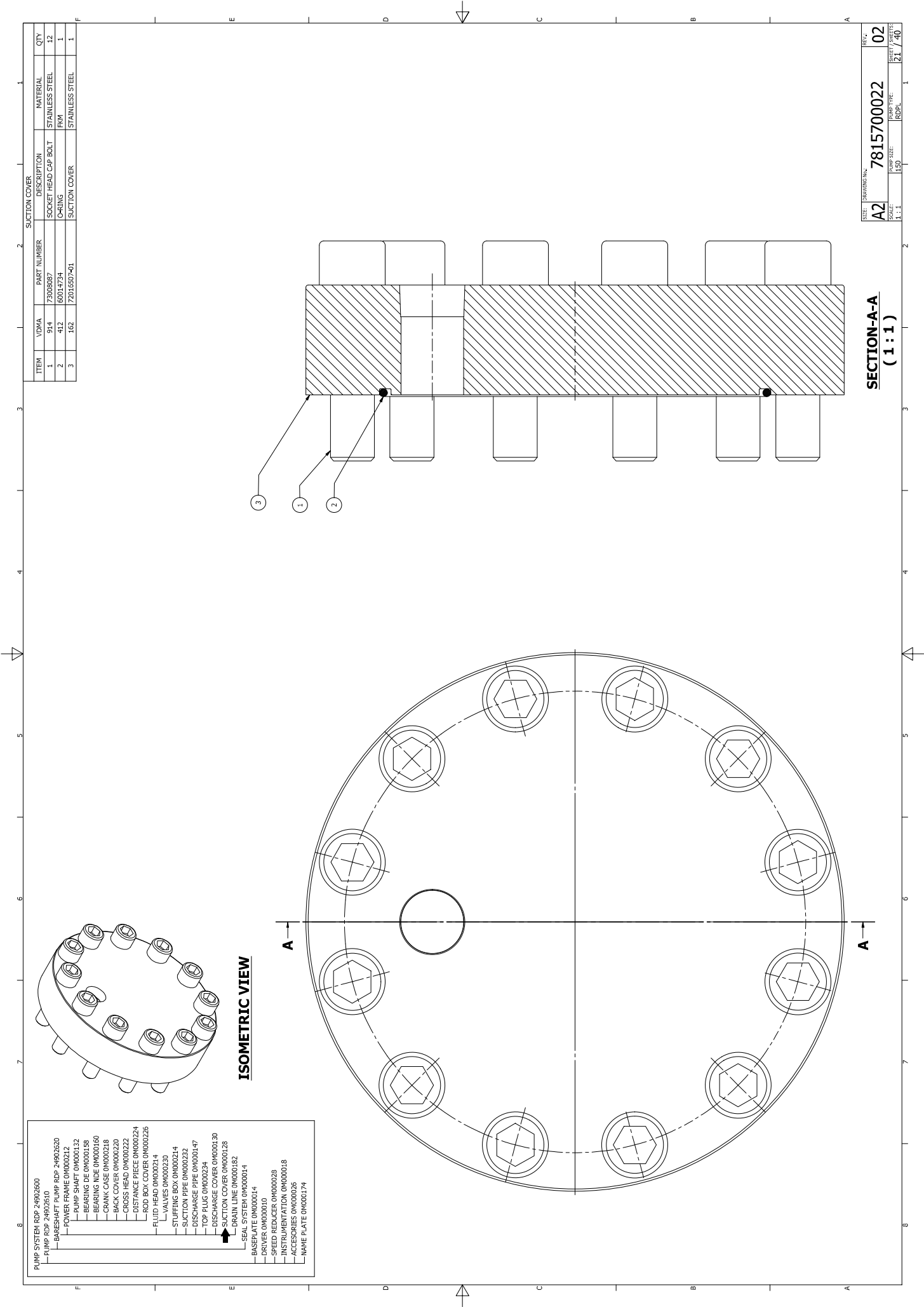
- PUMP SYSTEM RDP 24002500
- PUMP ROD 0M000100
  - BRACKET FRAME RDP 24002520
  - POWER SHAFT 0M000132
  - BEARING DE 0M000158
  - BEARING NDE 0M000160
  - CRANK CASE 0M000118
  - BACK COVER 0M000220
  - CROSS HEAD 0M000222
  - DISTANCE PIECE 0M000224
  - ROD BOX COVER 0M000226
  - FLUID HEAD 0M000214
  - VALVES 0M000230
  - STUFFING BOX 0M000214
  - SUCKION PIPE 0M000232
  - DISCHARGE PIPE 0M000147
  - TOP PLUG 0M000234
  - DISCHARGE COVER 0M000130
  - SUCKION COVER 0M000128
  - DRAIN LINE 0M000182
  - SEAL SYSTEM 0M000114
  - BASEPLATE 0M000014
  - DRIVER 0M000010
  - SPEED REDUCER 0M000028
  - INSTRUMENTATION 0M000018
  - ACCESSORIES 0M000026
  - NAME PLATE 0M000174

ITEM	QTY	DESCRIPTION	MATERIAL
1	8	SOCKET HEAD CAP BOLT	STAINLESS STEEL
2	1	CRANK	PKM
3	1	DISCHARGE NOZZLE	CARBON STEEL

REF:	7815700022	02
A2	150	18 / 40
SCALE:	1:1	RDHL





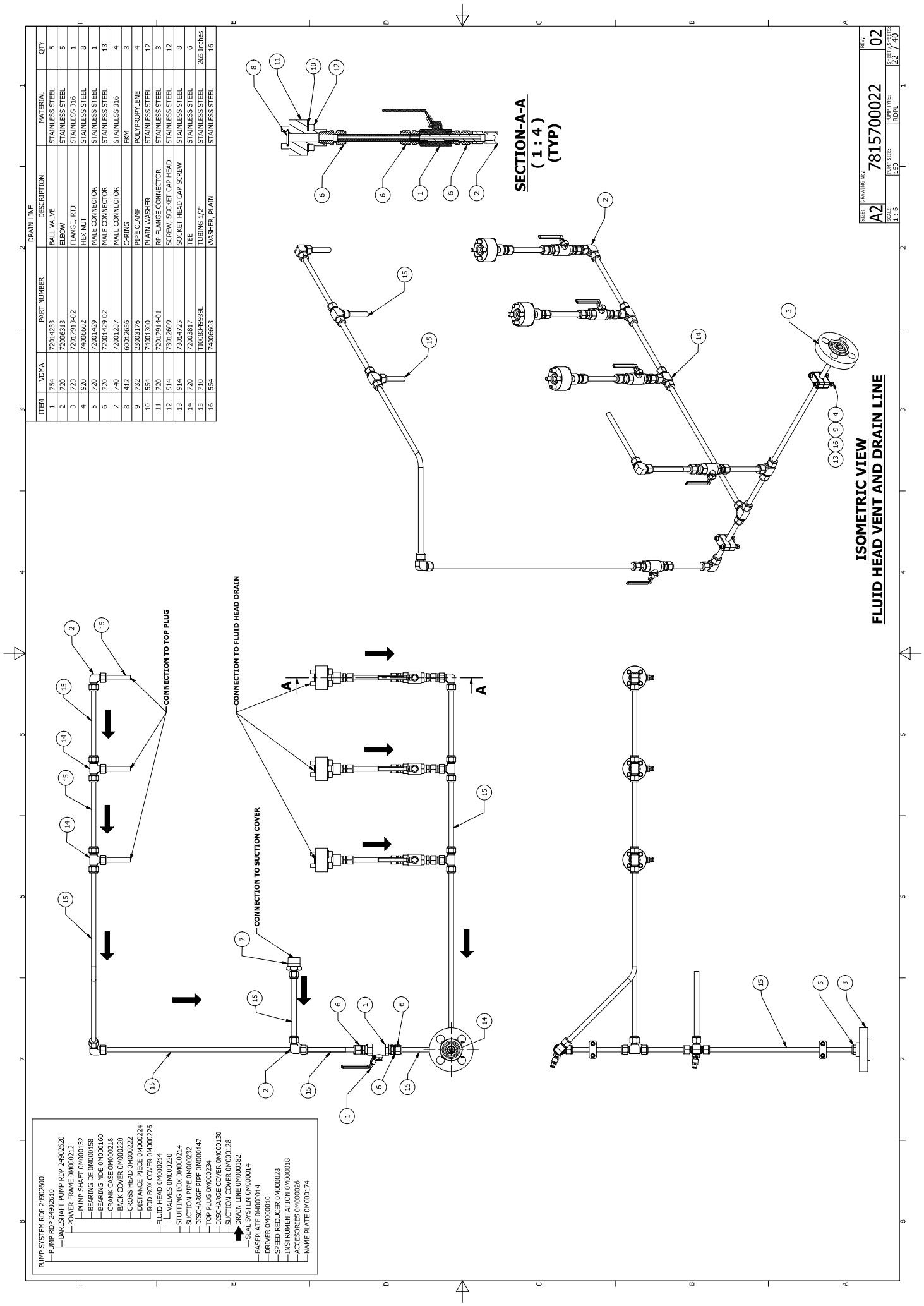


PUMP SYSTEM RDP 24902600	
PUMP RDP 24902610	
BARESHAFT PUMP RDP 24902620	
PUMP FRAME 0M000132	
PUMP SHAFT 0M000158	
BEARING DE 0M000160	
CRANK CASE 0M000218	
BACK COVER 0M000220	
CROSS HEAD 0M000222	
DISTANCE PIECE 0M000224	
ROD BOX COVER 0M000226	
FLUID HEAD 0M000214	
VALVES 0M000230	
STUFFING BOX 0M000214	
SUCTION PIPE 0M000232	
DISCHARGE PIPE 0M000147	
TOP PLUG 0M000234	
DISCHARGE COVER 0M000130	
SUCTION COVER 0M000128	
DRAIN LINE 0M000182	
SEAL SYSTEM 0M000014	
BASEPLATE 0M000014	
DRIVER 0M000010	
SPEED REDUCER 0M000028	
INSTRUMENTATION 0M000018	
ACCESSORIES 0M000026	
NAME PLATE 0M000174	

ITEM	VDMA	PART NUMBER	DESCRIPTION	MATERIAL	QTY
1	914	72000057	SOCKET HEAD CAP BOLT	STAINLESS STEEL	12
2	412	60014734	NUTTING	HRM	1
3	162	72016507-401	SUCTION COVER	STAINLESS STEEL	1

SIZE	DRAWING NO.	REV.
A2	7815700022	02
SCALE	PUMP SIZE	SHEET / PAGES
1 : 1	150	21 / 40

SECTION-A-A  
(1 : 1)



- PUMP SYSTEM PDS 24002600
- PUMP MOTOR PDS 24002600
  - PUMP MOTOR FRAME PDS 24002600
  - PUMP SHAFT OM000132
  - BEARING DE OM000158
  - BEARING NOE OM000160
  - CRANK CASE OM000218
  - BACK COVER OM000220
  - CROSS HEAD OM000222
  - DISTANCE PIECE OM000224
  - ROD BOX COVER OM000226
  - FLUID HEAD OM000234
  - VALVES OM000230
  - STUFFING BOX OM000232
  - SUCTION PIPE OM000232
  - DISCHARGE PIPE OM000234
  - TOP PLUG OM000234
  - DISCHARGE COVER OM000230
  - SUCTION COVER OM000230
  - SEAL SYSTEM OM000182
  - SEAL SYSTEM OM000182
  - BASE PLATE OM00014
  - DRIVER OM00010
  - SPEED REDUCER OM000028
  - INSTRUMENTATION OM000018
  - ACCESSORIES OM000026
  - NAME PLATE OM000174

ITEM	VDVA	PART NUMBER	DESCRIPTION	MATERIAL	QTY
1	754	7204233	BALL VALVE	STAINLESS STEEL	5
2	720	7200613	ELBOW	STAINLESS STEEL	5
3	723	7201791342	FLANGE, RTJ	STAINLESS 316	1
4	520	7400662	HEX NUT	STAINLESS STEEL	8
5	720	72001493	MALE CONNECTOR	STAINLESS STEEL	1
6	720	72001493-02	MALE CONNECTOR	STAINLESS STEEL	13
7	740	72001237	MALE CONNECTOR	STAINLESS 316	4
8	412	60012656	O-RING	FKM	3
9	732	23003176	PIPE CLAMP	POLYPROPYLENE	4
10	554	74001300	PLAIN WASHER	STAINLESS STEEL	12
11	720	7201791401	RP FLANGE CONNECTOR	STAINLESS STEEL	3
12	914	73012669	SCREW, SOCKET CAP HEAD	STAINLESS STEEL	12
13	914	73014725	SCREW, SOCKET CAP HEAD	STAINLESS STEEL	8
14	720	72003817	TEE	STAINLESS STEEL	6
15	710	T00804893SL	TUBING 1/2"	STAINLESS STEEL	265 inches
16	554	7400663	WASHER, PLAIN	STAINLESS STEEL	16

SECTION-A-A  
( 1 : 4 )  
(TYP)

ISOMETRIC VIEW  
FLUID HEAD VENT AND DRAIN LINE

